

CO-Series

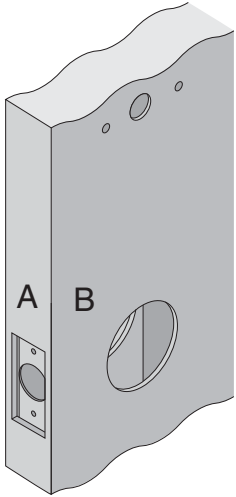
CO-100-CY

Door Type: Metal, Flat or Beveled Conforms to ANSI/BHMA A156.115

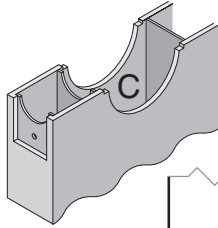
Door Thickness: 1 3/8" (35 mm) – 2 3/4" (70 mm)

Faceplate: Square Corner, 1 1/8" (29 mm) wide

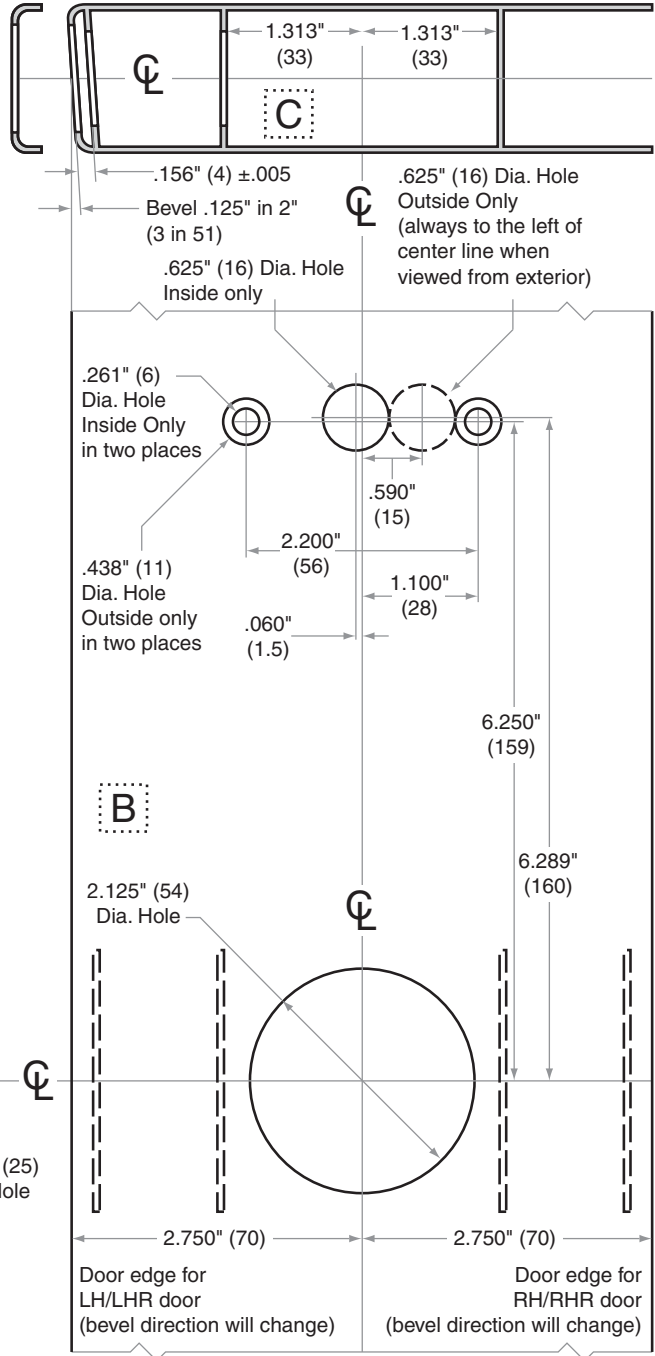
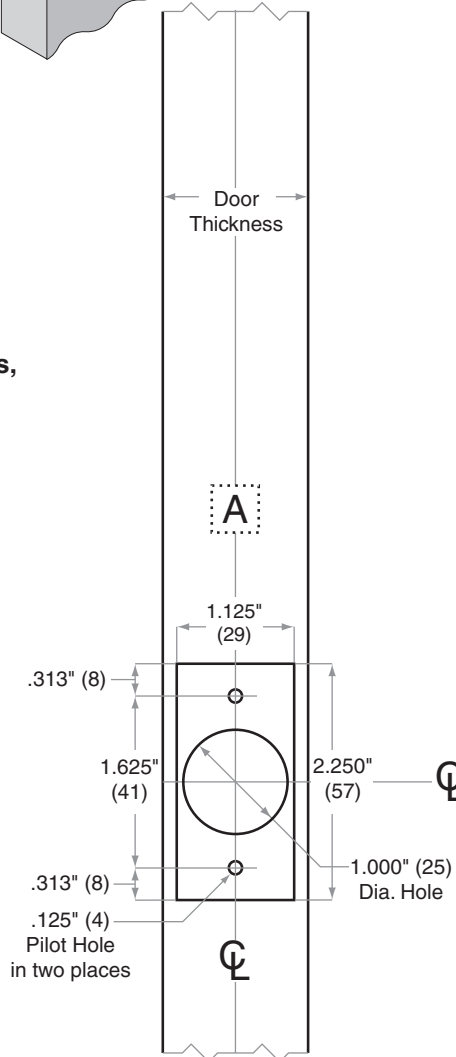
Backsets: Standard: 2 3/4" (70 mm) | Optional: 2 3/8" (60 mm), 3 3/4" (95 mm), 5 3/4" (146 mm)



IMPORTANT - It is critical to identify the interior and exterior sides of door in order to correctly locate the .625" holes



For Strike dimensions, see Templates J918, J919, J928, and J929



Dimensions shown in parentheses () are in millimeters

Template is not to scale.

Job: _____

TEMPLATE

Date: _____

Door Thickness: _____

CO102

Remarks: _____